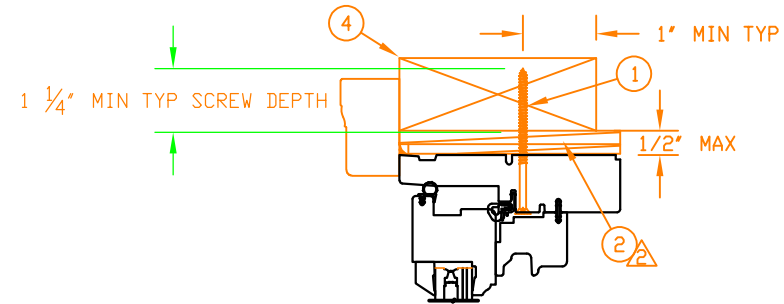
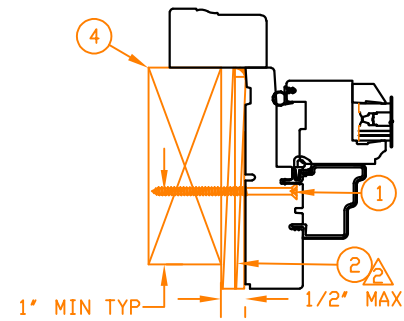


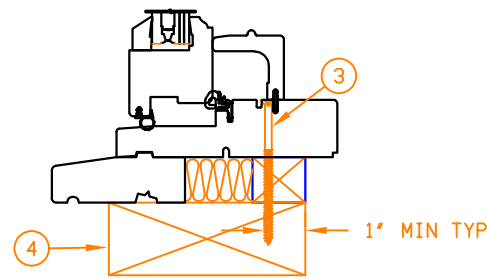
JAMB SCREW INSTALLATION



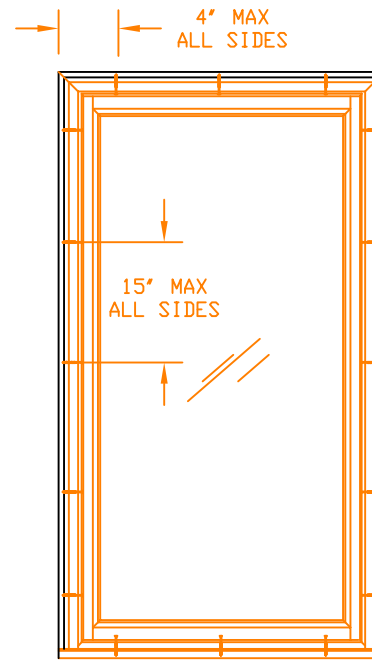
HEAD JAMB



JAMB



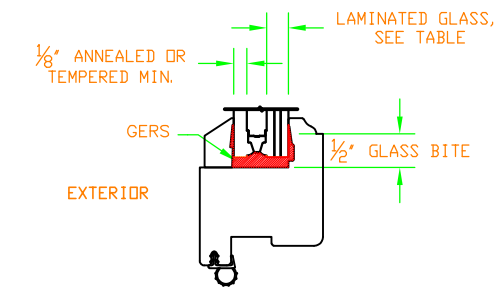
SILL



- JAMB SCREW INSTALLATION METHOD:
- UNIT MUST NOT BE IN DIRECT CONTACT WITH EITHER CONCRETE OR TREATED BUCK MATERIAL. IF SHIM SPACE IS LESS THAN 1/8" WRAPPING THE UNIT ON ALL 4 SIDES WITH WINDOW FLASHING TAPE IS REQUIRED AS A BARRIER BETWEEN THE UNIT AND CONCRETE OR TREATED LUMBER.
 - SECURE JAMBS AND HEAD JAMBS WITH #8 X 3" SCREWS.
 - SECURE THE SILL WITH #8 X 3 1/2" SCREWS.
 - SHIM AT EACH SCREW LOCATION.

UNIT	MAX FRAME SIZE	DP RATING	GLASS OPTION
UL WD CSMNT P IZ3	48 X 53 1/8	+65/-65	TYPE A

TYPE	LAMINATED GLASS MAKE UP
A	3.1mm(.122") ANN + .090KURARAY PVB + 3.1mm(.122") ANN



TYPICAL GLAZING DETAIL

- NOTES:
1. THIS PRINT IS FOR STRUCTURAL PERFORMANCE ONLY. FOR FLASHING & SEALING INSTRUCTIONS, REFER TO THE INSTALLATION INSTRUCTIONS.
 2. SHIMS
-PLACE A SHIM WITHIN 4-6 INCHES OF EACH CORNER AND SPACE ALL OTHERS EVENLY A MAXIMUM OF 15" APART.
 3. IF CHEMICALLY TREATED LUMBER IS USED FOR BUCK MATERIAL, FASTENERS INTO THE BUCK MUST BE A MINIMUM OF 0.90 OZ/FT² ZINC HOT DIPPED GALVANIZED OR STAINLESS STEEL TYPE 304 OR 316.

4	-----	WOOD BUCK BY OTHERS
3	-----	#8 X 3.500 WOOD SCREW
2	-----	SHIM
1	-----	#8 X 3.000 WOOD SCREW

ITEM NO	REF NO	DESCRIPTION
---------	--------	-------------

UNSPECIFIED TOLERANCES	
DECIMALS: XX ± .03 XXX ± .012	ANGLE DEG: ± .5
LINEAL: + .125 - .000	FAB LINEAL: ± N/A
MATERIAL: N/A	

MARVIN RESEARCH & DEVELOPMENT

PRODUCT: ULTIMATE CASEMENT
 CATEGORY:
 UNIT TYPE: UWCAPIZ3

DWG TYPE: INSTALLATION
 DESCRIPTION: INSTALLATION

CHK:	SIZE: B	CLASS: MISC	DWG NO: 00121202
APP:	SCALE: NA	DATE: 10/21/09	DWG BY: KOMPELIEN, SARA
			SHEET: 1 OF 1